

Tech-Dry®

BUILDING PRODUCTS



NO MORE RISING DAMP™

- ✓ DPC Cream forms a permanent silicone damp-course.
- ✓ Water based formula containing 80% active silicone.
- ✓ Installation is simple, safe and odourless.
- ✓ Suitable for brick, block or stone walls that contain mortar beds.
- ✓ Can be installed in any thickness of wall from one side only.

Tech-Dry silicone damp-course systems have been installed in over 30,000 Australian properties including private, commercial and important heritage buildings.

Order online or over the phone:

www.1800TechDry.com.au Ph: 1800 832437



TECH-DRY DPC CREAM TEST

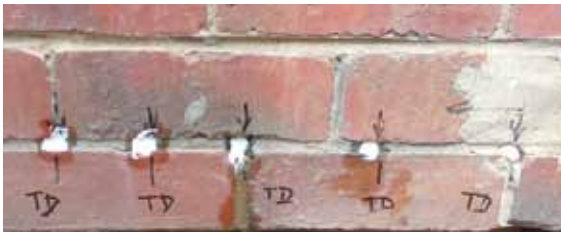


Tech-Dry DPC Cream is injected via 12mm holes at 80mm centers using a standard caulking gun. Bulk application can be performed using a pressure pump.



1 DPC Cream was injected into the mortar joint of a brick wall & absorption monitored.

2 A brick was removed from the wall and checked for water repellency (damp course formation).



After installation.



The whole brick surface and the mortar joint were found to be water repellent (note the water beading in photo above).



After 3 hours: >50% cream absorbed.



The brick was broken at the center of the two injection holes and dye applied to each broken face. DPC Cream has spread into the mortar joint and penetrated the brick forming a horizontal damp course (note that the dye has not been able to penetrate the top half of the brick).



After 24 hours: complete absorption.



After 48 hours: curing.