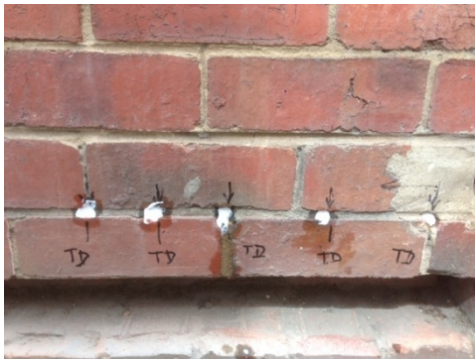
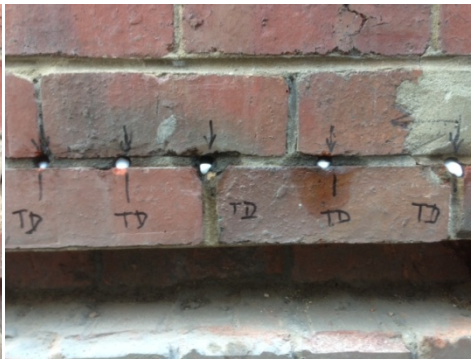


Tech-Dry DPC Cream – Test

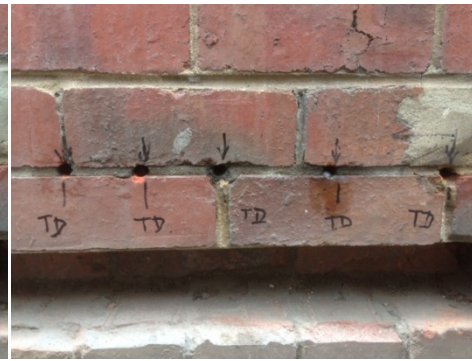
1) Inject Tech-Dry DPC Cream into the mortar joint of a real brick wall, and then check absorption and spreading



After installation



After 3 hr: >50% cream absorbed



After 24hr: complete absorption



After 48hrs: curing

2) Take the brick from the wall and check damp course formation (water repellent zone)



The whole brick surface and the mortar joint were water repellent



Breaking the brick from the centre of two injection holes: Cream has spread into the mortar joint & penetrated into the brick, forming a horizontal damp course.